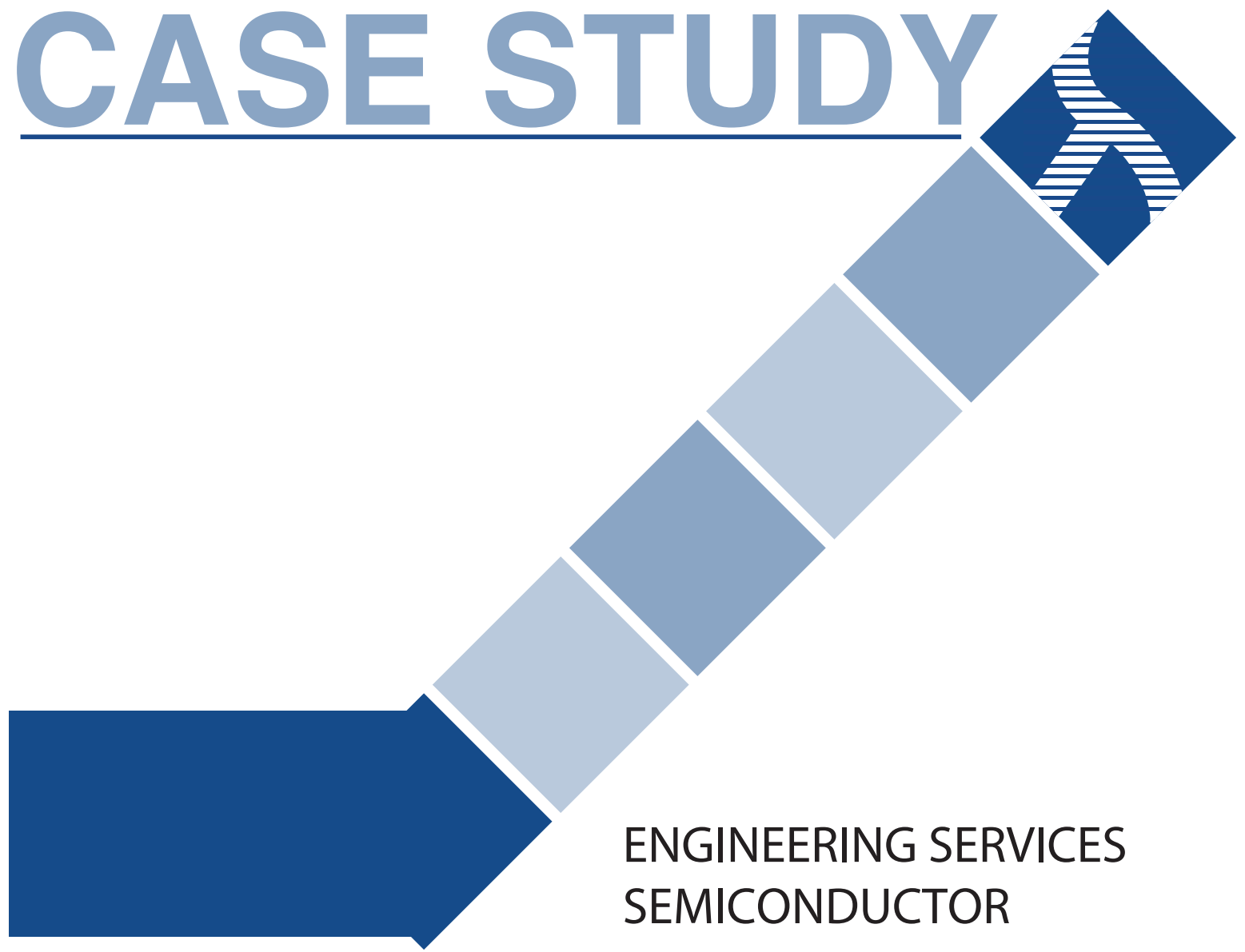


CASE STUDY



ENGINEERING SERVICES
SEMICONDUCTOR

Stay connected

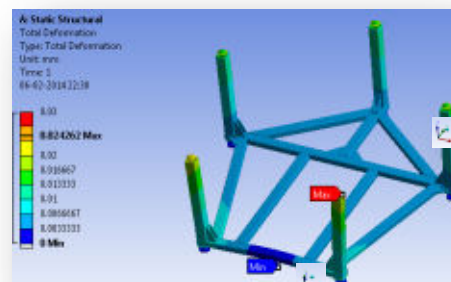
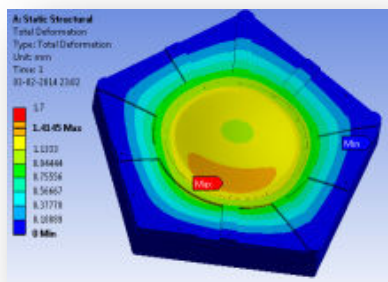
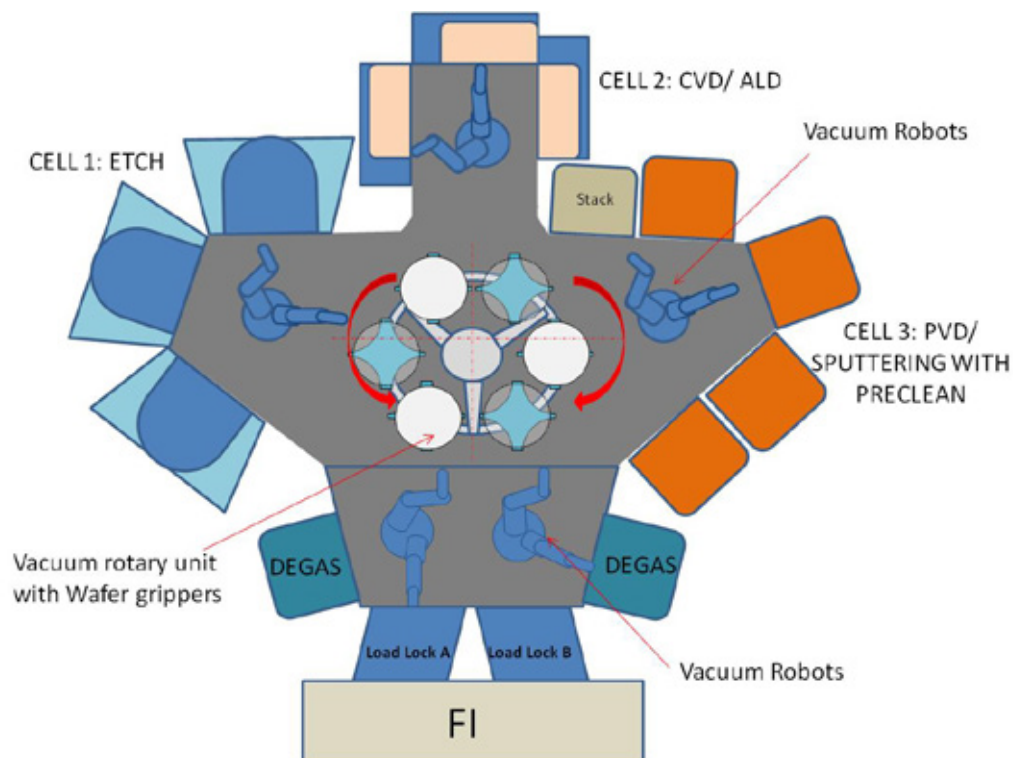


ASM Technologies Limited

MODULAR TRANSFER CHAMBER (MTC)

Transfer Chamber for Tools at packaging:

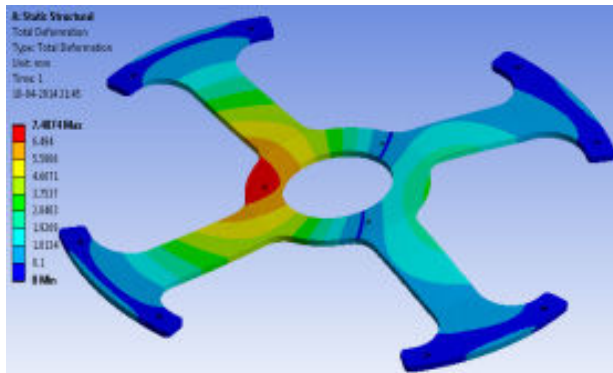
- ◆ ~80% of the common parts from current tools
- ◆ Allows to configure the system with single transfer chamber and multiple process chambers optimized for required recipe
- ◆ Productivity enhancement
- ◆ Reduced floor area
- ◆ Reduced system cost
- ◆ Modular for: 200mm/300mm substrate size



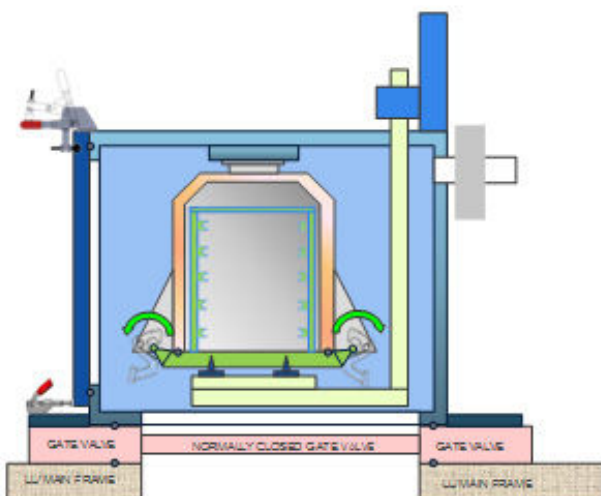
ASM Technologies Limited

VACUUM CASSETTE UNIT

- ◆ To carry wafers in a vacuum environment
- ◆ It integrates tools in different facilities/ location/ country
- ◆ Will reduce preliminary processes on wafers
- ◆ Easy to carry



Control Panel

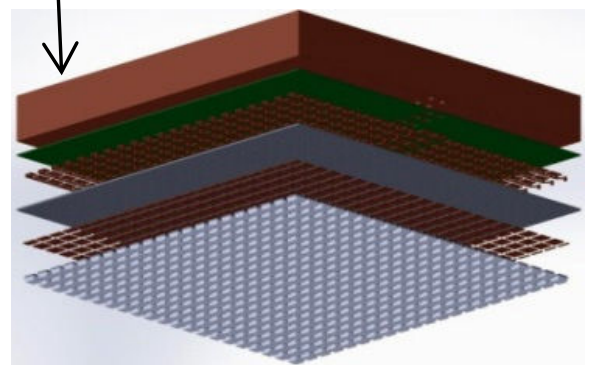
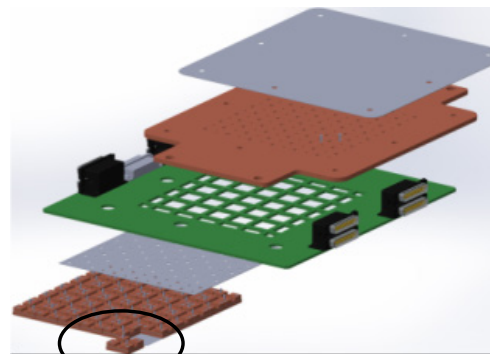
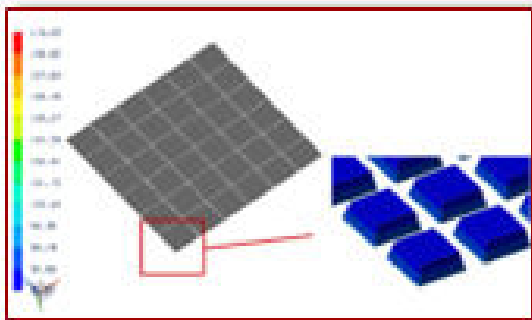
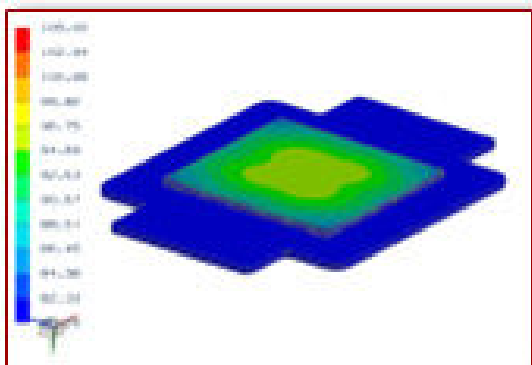


Controller Unit



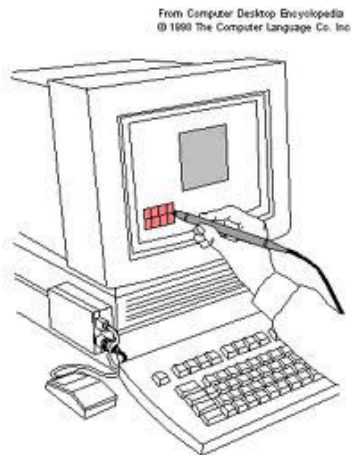
CHAMBER WITH ALTERNATE COST EFFECTIVE HEATING UNIT

- ◆ Solid state heater (Up to 4000 C)
- ◆ Has considerable advantage over conventional heaters
- ◆ Increased efficiency as narrow band light is generated
- ◆ Selective heating mechanism to adopt as per required target area
- ◆ Modular construction for easy maintenance and system scaling
- ◆ Intelligent heating cell elements for diagnostics and control



DESIGN AND DEVELOPMENT OF SIMULATOR WITH TOUCH PANEL TO REPLACE LIGHT PEN UNIT

- ◆ To replace the existing Light Pen units of process tools, with out any changes made to the Host controller
- ◆ A controller unit which Simulates the Operation of a light Pen unit and generates appropriate Signal to the Host
- ◆ No Loss of calibration
- ◆ Eliminates Bulky CRT monitors
- ◆ Eliminates Bulky Light pen control units
- ◆ Only inputs required are VGA signals from host
- ◆ Can be replace with Light Pen units without any modification required on the Host side



OLD SYSTEM: Light
Pen, Interface unit,
CRT monitor

NEW
implementation:
Touch Screen Monitor



ASM Technologies Limited